



solulink™



**A Novel Bioconjugation Technology
for Assay Development... and More!**



GET BETTER RESULTS.
GUARANTEED.

www.solulink.com

Presentation overview

- Who we are
- Solutions we provide for our customers
- Solulink's technology
 - Linking system
 - The Solulink advantage
 - Applications
- Solulink products
 - ChromaLink™ traceable linkers: Biotin and Digoxigenin
 - Magnetic beads and agarose
 - Antibody labeling/detection kits
 - Western blot
 - Crosslinking kits
 - Peptides and peptide synthesis products

Who we are

Established in 2003, Solulink develops, patents, manufactures, and sells consumables to over 1,100 customers worldwide in life science, diagnostics, and pharmaceutical markets.

Opportunities: Customers want diagnostics and assays to detect disease earlier and to run more tests at the same time. Aging worldwide baby boomer population drives the need for more accurate, earlier, and faster detection diagnostics for everything from cancer to arthritis.

Solutions: Solulink has invented a proprietary molecule that is especially good at linking (conjugating) detection and identification components onto all types of antibodies, peptides, DNA, RNA, and proteins, which speeds assay development and provides new capabilities. Solulink has been validated by customers at prestigious pharmaceutical, biotechnology, and clinical research institutions and university laboratories worldwide.

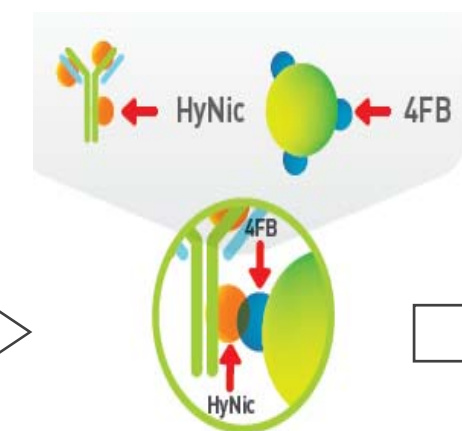
Solutions we provide for our customers

- Unique and innovative **solutions for linking molecules**
 - Proven to be the method of choice for the conjugation of polynucleotides to antibodies
 - Links molecules to any surface or other biomolecule
- Applications include assay development, detection, multiplexing, immobilization, diagnostics, and therapeutics
- Enables unprecedented levels of efficiency and simplicity in bioconjugation
- Versatile – One technology for conjugation and immobilization of all biomolecules
- Expert Services – Solulink performs small and large scale conjugations using its technology to link any biomolecule or surface

Solulink Product Uses

Input

DNA
Antibodies
Peptides
Proteins
Beads
Slides
Plates
Fluorochromes
Enzymes



Solulink's linker system is used to combine components for customer applications

Applications

Assay Development
Flow Cytometry
Immuno-histochemistry
Diagnostics
ELISAs
ImmunoPCR
Bead Assays
siRNA
Microarrays
Western Blots
EliSpots
SPR

The Solulink advantage

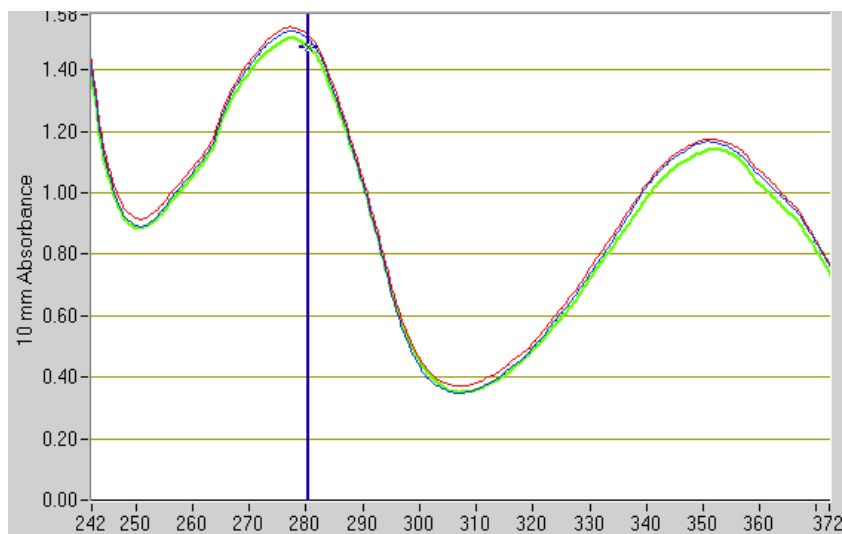
- **Kinetics:** Fast conjugation < 30 min with new catalyst
- **Reproducible:** Controllable, specific covalent linking
- **Efficient:** Higher yields, easier purification, better stoichiometry
- **Quantifiable:** UV-traceable conjugations/linkers
- **Linker stability:** Stable on modified biomolecules and surfaces
- **Conjugate stability:** Thermo-stable to PCR temperatures; pH stable 2.5-10
- **Bio-orthogonal:** 1 + 1 = 3 Retains inherent biological function of biomolecules
- **Versatile:** One technology for conjugation and immobilization of all biomolecules
- **Variety of linkers available:** PEG4, disulfide cleavable
- **Gentle:** Preserves antibody, biomolecule functionality
- **Scalable:** Micrograms to grams to kilos

Solulink products & services

- ChromaLink™ traceable linkers: Biotin and Digoxigenin
- Magnetic beads and agarose beads (streptavidin, pre-activated with linker and amino versions of all)
- Antibody labeling/detection kits
- Western blot kits and reagents
- Bead link kits
- Crosslinking kits
- Peptides and peptide synthesis products
- Custom conjugation services

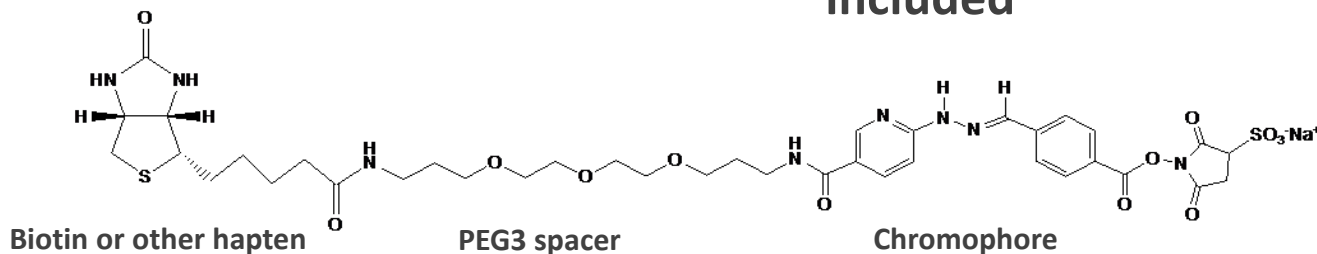
Solulink Products: ChromaLink™ traceable linkers

Built-in Quantification



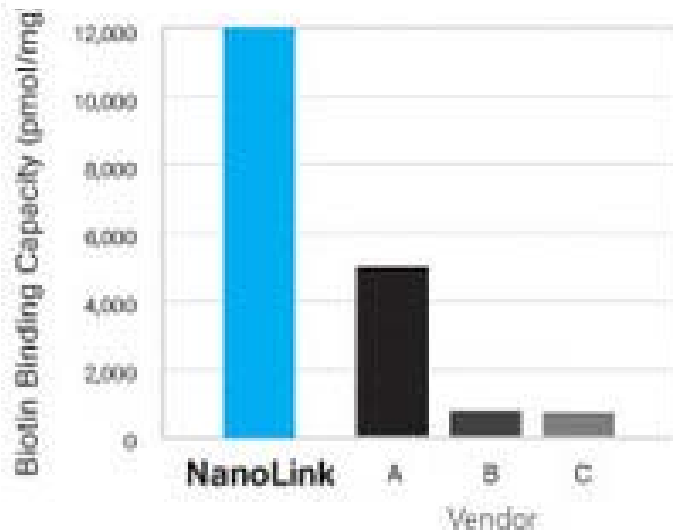
Biotin and Digoxigenin

- Unique built-in quantification, UV-traceable signature wavelength
- Simply measure A_{280} and A_{354} to determine antibody concentration and # labels/antibody
- Easy to use kit format, everything included



Solulink Products: Magnetic beads and agarose

Highest Biotin-Binding Capacity

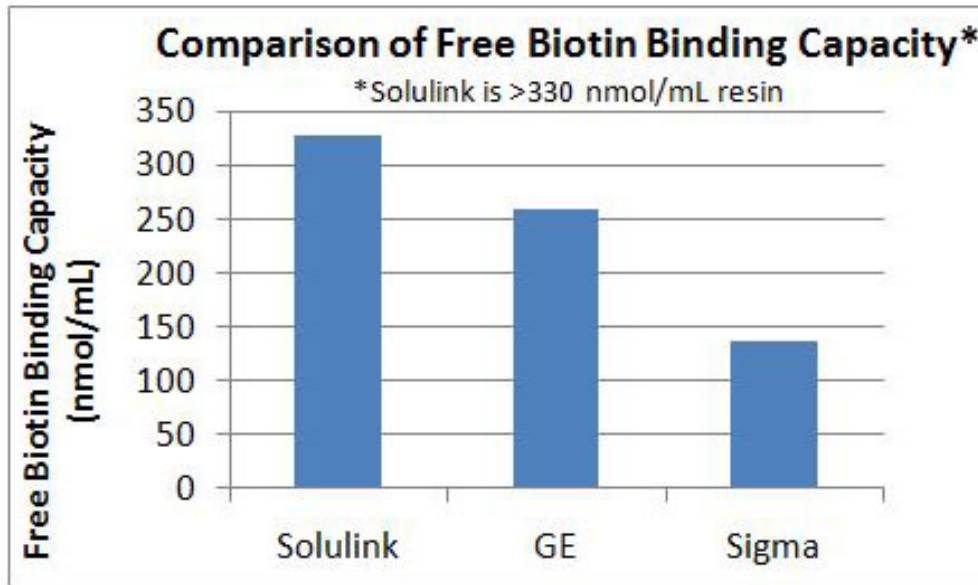


MagnaLink™ and NanoLink™ *streptavidin beads*

- Highest biotin-binding capacity on the market
- Binding capacity can be “dialed in”
- Lower background noise
- Multiple versions available
 - Streptavidin
 - Amino
 - 4FB

Solulink Products: Magnetic beads and agarose

Higher Biotin-Binding Capacity – at 20% Lower Price



Streptavidin Agarose Ultra Performance™

- Higher biotin-binding capacity at 20% lower price
- Binding capacity can be “dialed in”
- Crosslinked agarose - Solulink's proprietary linker enables higher binding capacity, lower background, and less leaching

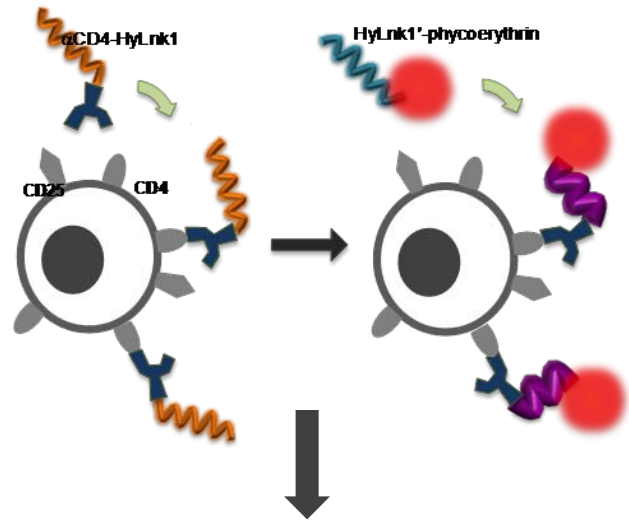
Solulink Products: Antibody labeling/detection kits

No Chromatography Required

- Deliver **100% purified** and ready-to-use direct-labeled antibody conjugates.
- Designed to be **easy-to-use**, perfect regardless of your level of experience with conjugation.
- **Catalyzed conjugation** – Fast catalyzed method generates conjugates in approximately 4-6 hrs.
- **Gentle** – Amine-reactive chemistry leaves antibodies intact - no reducing reagents.
- **Versatile** – Compatible with western, ELISA, or IHC applications.
- **Efficient** – 100% conversion with 40-75% yields.

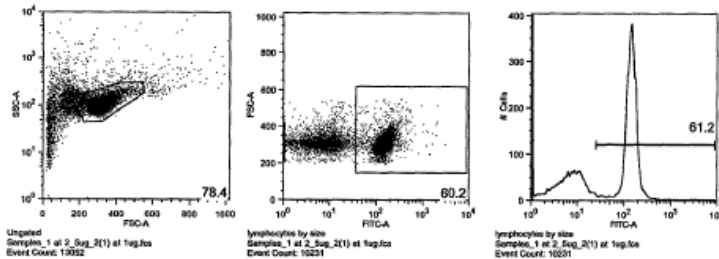
Solulink Products: Antibody-oligo conjugation kit

First Ever!



Uses

- Flow cytometry
- Immunohistochemistry
- Immunoassays



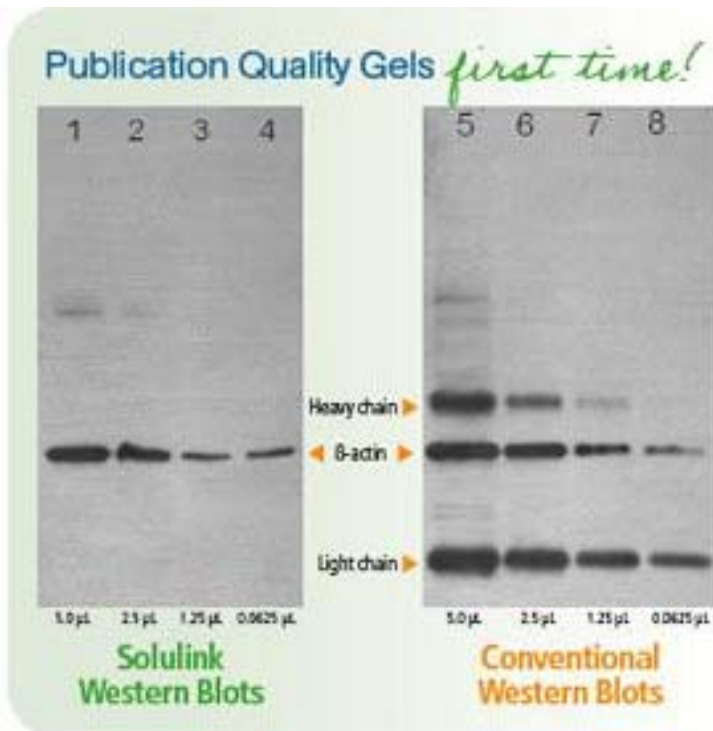
Flow cytometry data with Ab/oligo conjugate
+ complementary poly-DY490 detector

GET BETTER RESULTS.
GUARANTEED.

www.solulink.com

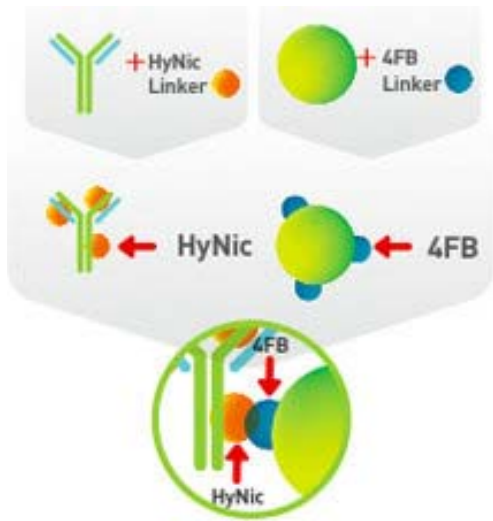
Solulink Products: Western blot products

No secondary antibodies means better signal and low background!



- Publication quality gels the first time
- Less background
- Primary antibody is used – no secondaries
- Sensitivity is better to using secondaries
- Significant time savings when using the same antibody multiple times

Solulink Products: Crosslinking kits

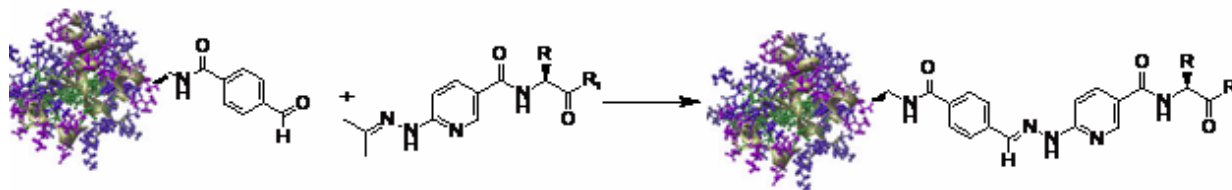


HyNic-modified biomolecule 1 is incubated with 4FB-modified biomolecule 2 in a TurboLink™ catalyzed conjugation reaction.

Conjugates	Applications
Antibody-oligonucleotide	i-PCR (Real-time Immuno-PCR)
Streptavidin-oligonucleotide	Binding assays and microarrays
Antibody-enzyme	ELISAS, westerns
KLH-peptide	Carrier-based antibody production
Protein-peptide	Carrier-based antibody production

Solulink Products: Peptide products

- Peptide synthesis products – machine ready
- Pre-activated peptides – PepLink products
- Peptide-siRNA conjugates



**Chemical scheme employed to link
HyNic-modified peptides to 4FB-modified
biomolecules.**



Solulink Conjugation Services

- We can make the conjugates that others cannot.
- **Our chemistry enables us to prepare conjugates that were previously very difficult or impossible to make.**
- **We can make custom conjugations to ANY antibody, oligo, protein, peptide, or solid surface.**
- **Bulk packaging or custom packaging is available.**

Thank You

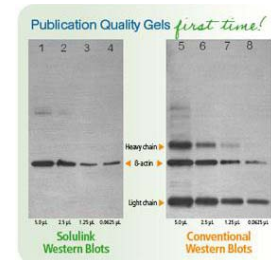
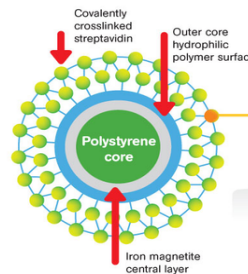
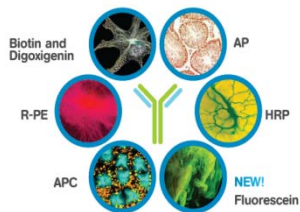
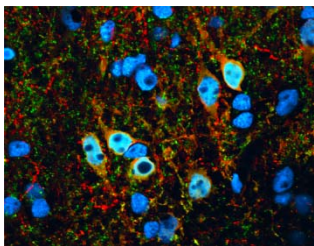
Interested in learning more? Please contact us:

solulinkTM

9853 Pacific Heights Blvd., Ste H
San Diego, CA 92121

+1.888.625.0670

www.solulink.com



GET BETTER RESULTS.
GUARANTEED.

www.solulink.com